



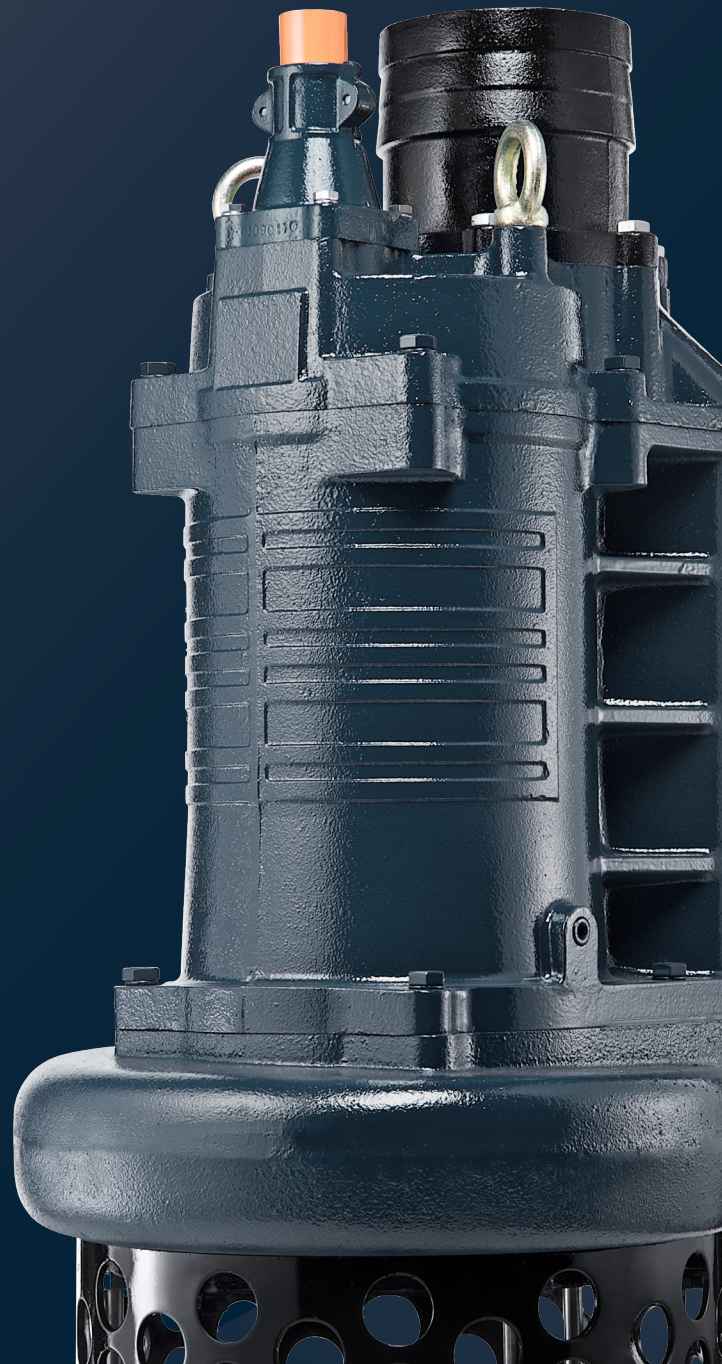
50Hz

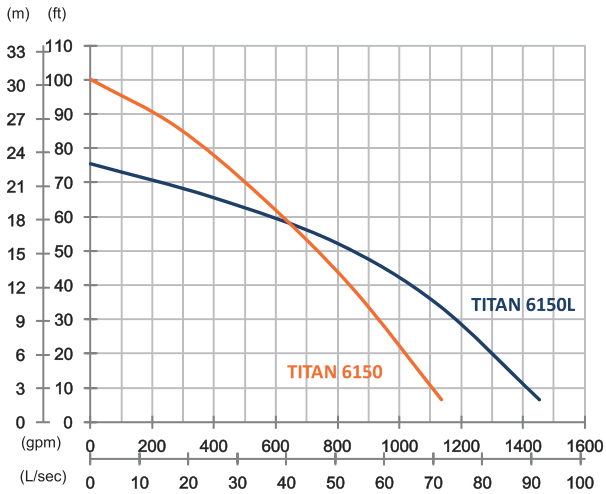
Rugged, reliable and cost effective, the Titan series pumps deliver excellent performance and serve a wide range of tough dewatering applications like mines, construction site, rental applications and other demanding industries.

Dewatering Pump

# TITAN 6150/6150L

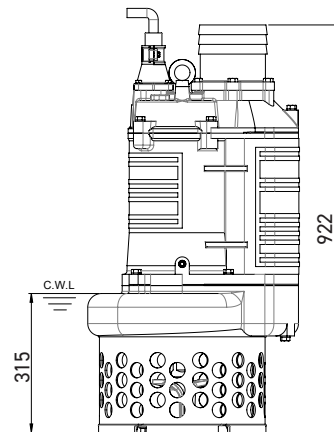
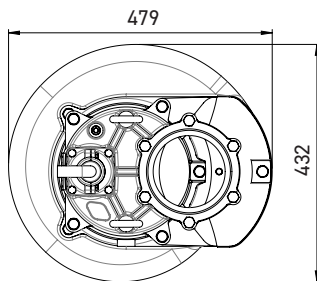
Heavy Duty Dewatering Pump





|                      | TITAN 6150                     | TITAN 6150L                    |
|----------------------|--------------------------------|--------------------------------|
| <b>OUTPUT</b>        | 15 kW (20 HP)                  | 15 kW (20 HP)                  |
| <b>OUTLET</b>        | 6" (150 mm)                    | 6" (150 mm)                    |
| <b>SOLID PASSAGE</b> | 35 mm                          | 35 mm                          |
| <b>Weight</b>        | 204 kg                         | 205 kg                         |
| <b>HEAD</b>          | Rated: 20 m<br>Max: 30.5 m     | Rated: 16 m<br>Max: 23 m       |
| <b>FLOW</b>          | Rated: 35 L/s<br>Max: 71.6 L/s | Rated: 50 L/s<br>Max: 91.6 L/s |

|                                |               |                                   |
|--------------------------------|---------------|-----------------------------------|
| <b>Pump Type</b>               |               | Electric Submersible Pumps        |
| <b>Motor</b>                   | Phase         | 3-Phase                           |
|                                | Type          | Induction Motor                   |
|                                | Poles         | 4 Pole (1450 rpm)                 |
|                                | Insulation    | Class F                           |
|                                | Protector     | Circle Thermal Protector          |
| <b>Starter</b>                 |               | D.O.L.                            |
| <b>Lubricant</b>               |               | Food Grade (ISO VG32)             |
| <b>Specs.</b>                  | Impeller Type | Opened                            |
|                                | Shaft Seal    | Double Mechanical Seal            |
|                                |               | Silicon Carbide VS Ceramic/Carbon |
|                                | Bearings      | C3 Shielded ball bearings         |
|                                | Cable         | H07BQ-F                           |
| 10 m or longer upon request    |               |                                   |
| <b>Materials</b>               | Pump Casing   | Ductile Iron                      |
|                                | Impeller      | Chromium Iron                     |
|                                | Motor Frame   | Gray Iron                         |
|                                | Motor Shaft   | Stainless Steel                   |
|                                | Strainer      | Carbon Steel                      |
| <b>Max. Liquid Temperature</b> |               | 40°C (104°F)                      |
| <b>Max. Submersion Depth</b>   |               | 20 m (66 ft)                      |
| <b>pH Range</b>                |               | pH 5 - pH 8                       |



unit : mm  
C.W.L : Continuous running water level